

AV-SF6000G

Installation Guide

Revision 0.01 2015.9.10

**Professional AV Systems Business Unit
Panasonic AVC Networks Company
Panasonic Co., Ltd.**

1. INTRODUCTION	3
2. INSTALLATION.....	4
2.1. Installing the software (Windows).....	4
2.2. Installing the software (Mac)	6
3. OPENING/CLOSING THE SOFTWARE	9
3.1. Opening the software (Windows).....	9
3.2. Opening the software (Mac).....	9
3.3. Closing the software (Windows).....	9
3.4. Closing the software (Mac)	9
4. OPERATING INSTRUCTIONS.....	10
4.1. Viewing the operating instructions (Windows)	10
4.2. Viewing the operating instructions (Mac).....	10

1. Introduction

This manual describes how to install the Software Control Panel application software for the AV-HS6000 (herein referred to as the "software") on Windows and Mac computers.

System requirements

The following hardware and software are required to use the software.

Hardware

- CPU
Core i7 2.2 GHz or higher
- Memory
8 GB or higher
- Display
1920x1080 or higher

Software (Windows)

- OS
Windows 7 Professional (SP1), Ultimate (SP1) 32-bit/64-bit
Windows 8.1 32-bit/64-bit

Software (Mac)

- OS
Mac OS X 10.10 Yosemite

2. Installation

For details on the installation procedure, see section 2.1 for Windows and section 2.2 for Mac.

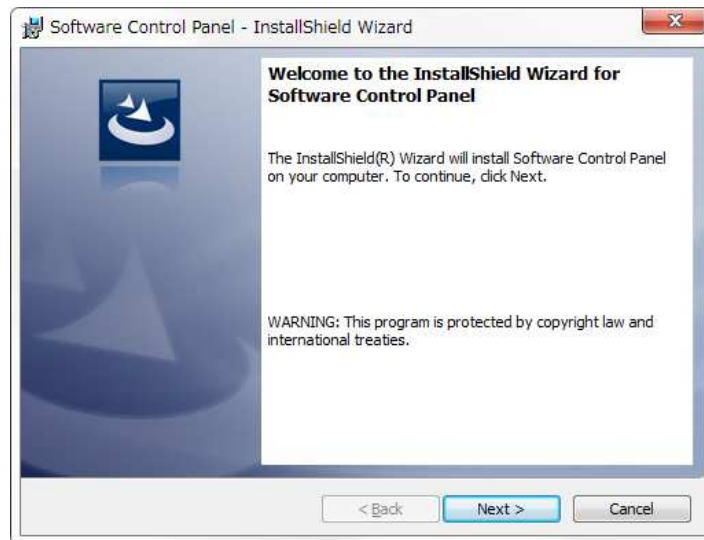
2.1. Installing the software (Windows)

<Note>

- Log into an administrator account to perform installation.

1. Double-click the downloaded file to extract it and display the Setup.exe file.
2. Double-click Setup.exe.

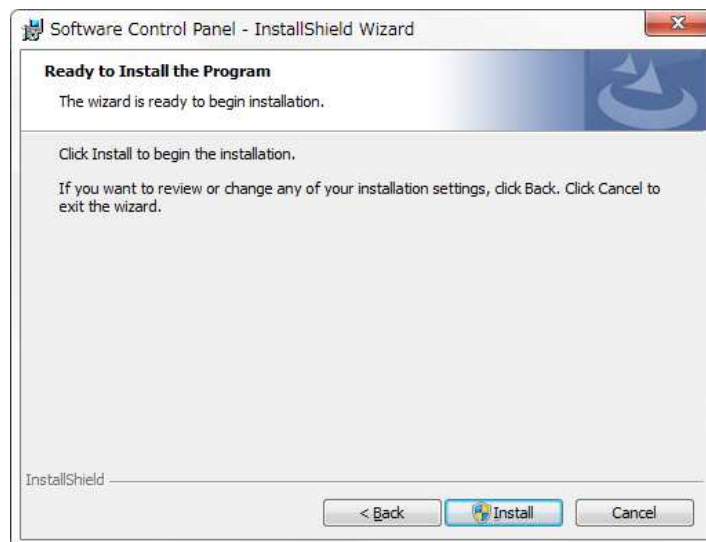
When the installation screen appears, click [Next].



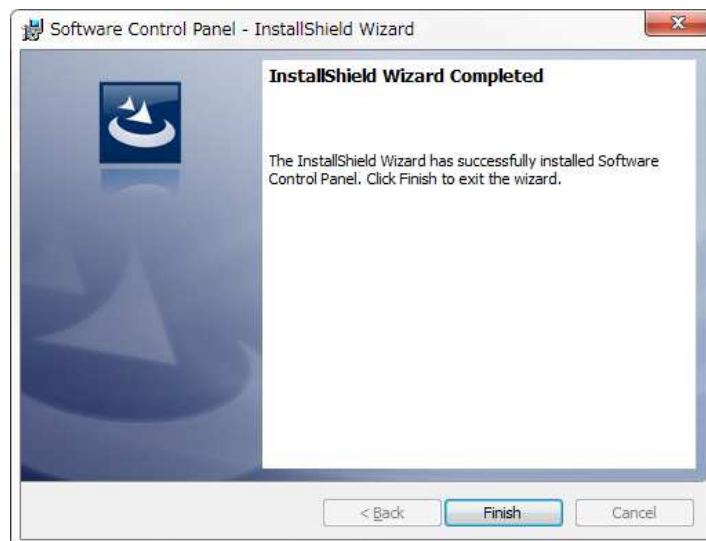
3. When the license agreement appears, read it carefully, select [I accept the terms in the license agreement], and then click [Next].



4. When the install confirmation screen appears, click [Install] to start installation.



5. When installation is complete, click [Finish] to close the dialog box.

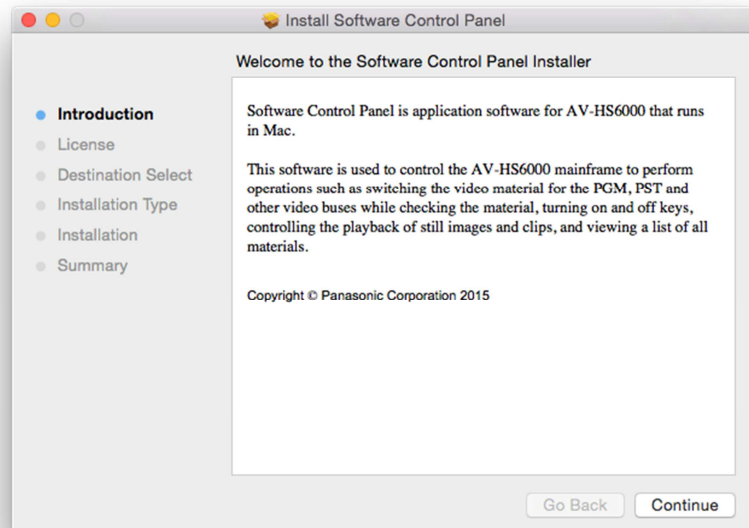


2.2. Installing the software (Mac)

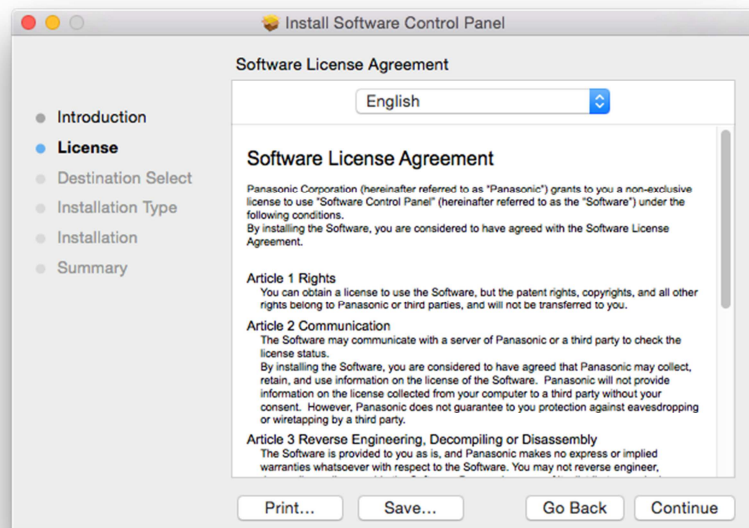
<Note>

- Log into an administrator account to perform installation.

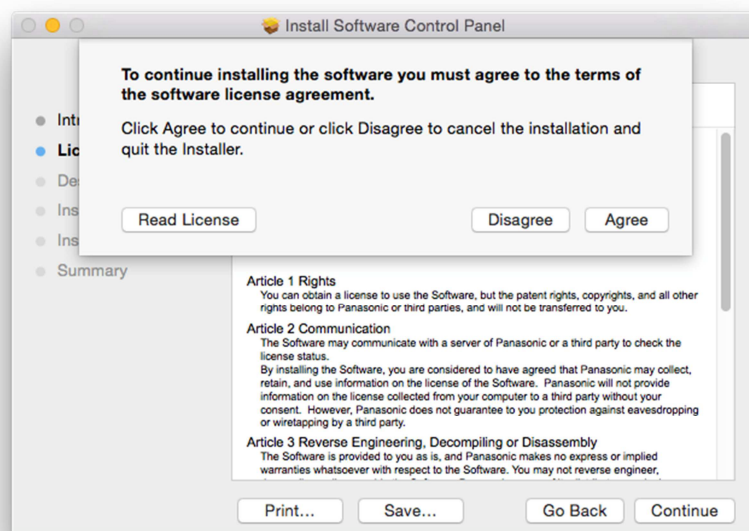
1. Double-click the downloaded file to extract it and display the installer icon for the software.
2. Double-click the installer icon.
When the installation screen appears, click [Continue].



3. When the license agreement appears, read it carefully and click [Continue].



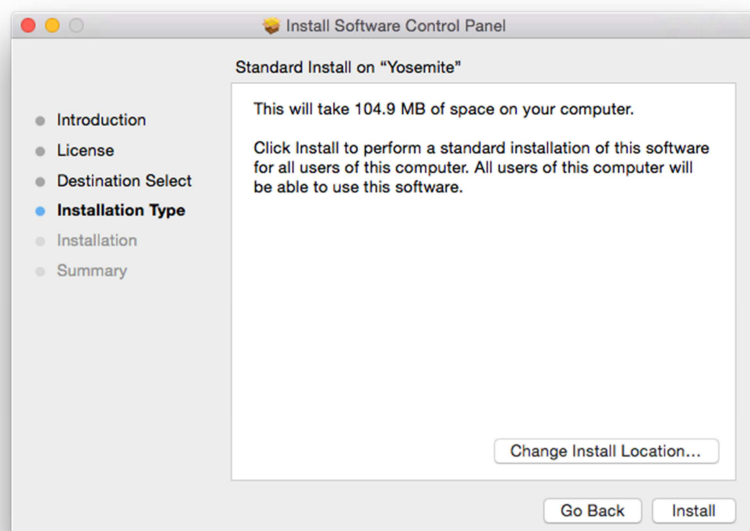
- When the license agreement confirmation screen appears, click [Agree].



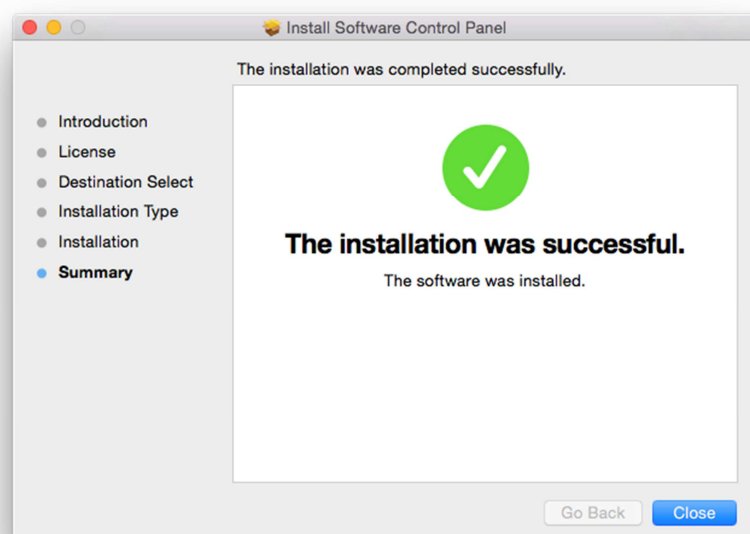
- When the Select a Destination confirmation screen appears, click [Continue].



6. When the install confirmation screen appears, click [Install] to start installation.



7. When installation is complete, click [Close] to close the dialog box.



3. Opening/Closing the Software

3.1. Opening the software (Windows)

In the Windows Start menu, click [Program] → [Software Control Panel] → [Software Control Panel].

3.2. Opening the software (Mac)

In the Finder, double-click the [Software Control Panel] icon found in the [Applications] folder.

3.3. Closing the software (Windows)

While the software is running, click the [x] button at the top right of the window.

3.4. Closing the software (Mac)

While the software is running, click the [x] button at the top left of the window.

4. Operating Instructions

The operating instructions for the software are provided as a help file that can be displayed via a web browser.

4.1. Viewing the operating instructions (Windows)

In the Windows Start menu, click [Program] → [Software Control Panel], and double-click the shortcut icon to display the operating instructions on your web browser.

- [Operation Manual_E]: English operating instructions
- [Operation Manual_J]: Japanese operating instructions
- [Operation Manual_C]: Chinese operating instructions

4.2. Viewing the operating instructions (Mac)

In the Finder, double-click the shortcut icon found in the [Applications] folder to display the operating instructions on your web browser.

- [Operation Manual_E]: English operating instructions
- [Operation Manual_J]: Japanese operating instructions
- [Operation Manual_C]: Chinese operating instructions